



AMERICAN SOCIETY OF
SAFETY PROFESSIONALS

Region VIII

Safety Certifications & Designations – Where to Go?

Alexis Flink, MS, OHST, WCP, ASP, CSP

Tim McCarty, MSc, ASP, CSP, ARM, ALCM, CSSM, CPSI, ABCP, GradIOSH





Certified Occupational
Safety Specialist



AMERICAN SOCIETY OF
SAFETY PROFESSIONALS





Our Stories

- Alexis
- Tim



Motivation





Motivation

ReadexResearch

- FT SH&E Professionals
- At least one certification
- Typically earn \$20,000 more per year

CSP

- Adds \$13,000 to median base pay with other certifications
- Adds \$30,000 to base pay of those who have no certifications

Motivation





Picking the Right Path

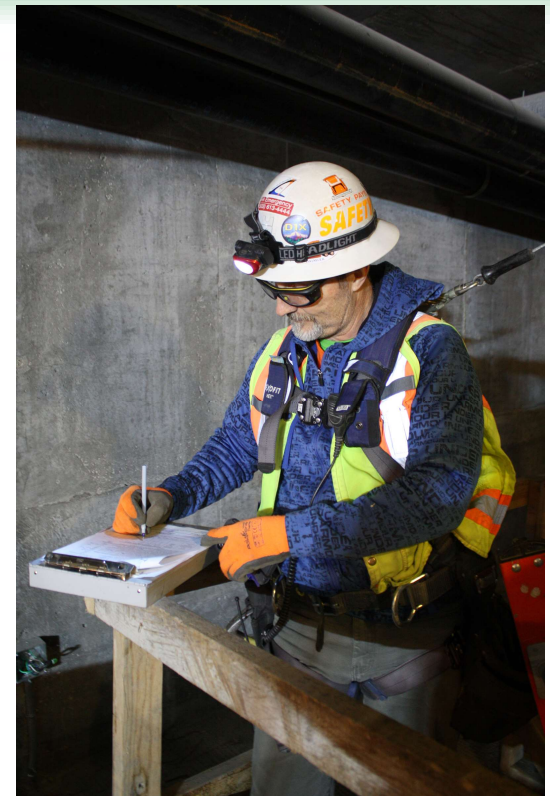
- Pre-requisites before you can test
- Education
- Work requirements





Monetary Expectations

- How much to test
- How much to renew
- Where to find funds- ASSP/OSHA Grants





Time and Experience Expectations

- How long to block time out/ estimating time to study
- What percentage of your job can be used for the certification





Continuing Education Units

- How many you accrue for participating
- How many you need to maintain certification
- How you can earn CEU's





Certified Occupational
Safety Specialist



AMERICAN SOCIETY OF
SAFETY PROFESSIONALS



Resources

Alexis Flink, MS, OHST, WCP®, CSP

Safety Management Consultant

The MEMIC Group

207-482-4127

AWestin@memic.com

Tim McCarty, MS, ASP, CSP, ARM, ALCM, CSSM, CPSI, ABCP, Grad IOSH

Director – Safety & Risk Consulting

Clark Insurance

207.523.2204

tmccarty@clarkinsurance.com



Safety Certifications

Certifications Sorted Alphabetically by Organization

NSC Certifications listed first. ANSI-accredited certifications include re-certification requirements.

Organization	Certification & Abbreviation	ANSI Accredited	Details
National Safety Council www.nscnet.org or www.coss.net	COSHS Certified Occupational Safety Specialist ASC Advanced Safety Certificate		<ul style="list-style-type: none"> \$1,799 for members, \$2,295 non-members. 40 hours learning w/ authorized trainer. Meets ANSI Z490.1 Prerequisite: high school diploma or equivalent Select the combination of courses that interest you. 4 day courses: \$1,295 for members, \$1,650 for nonmembers. 1 day courses: \$225 for members, \$425 for nonmembers. Consp to 10.4 CEUs, 8-16 days of training. Must be completed in a 5 year period.
American Society of Safety Professionals (ASSP) NOTE: These are certificates – not professional certifications. assp.org/education	Certificate in Safety Management Certificate Executive Program in Safety Management Certificate Global Safety Management Certificate		<ul style="list-style-type: none"> Learn leadership skills, ethics, developing budgets and controlling worker's compensation costs, and designing safety programs. Complete required courses (7 CEUs) within 5 years Member price per course – \$250, nonmember prices \$800 Next step after the Certificate in Safety Management Covers contemporary safety management methods and leadership strategies (4.9 CEUs). Final essay also required. Prerequisites: 1) Hold Certificate in Safety Management & member of ASSP 2) Hold a CSP, CHMM, ARM, CHST, CH or CSHM 3) Have a Bachelor's degree plus 5 years of experience in OSH 4) Have a professional engineer working in the safety field. Learn best practices. Learn how to select and implement an appropriate safety management plan. Learn regulations, standards, and legislation that apply across multiple jurisdictions and countries. Prerequisites: none
	ISO 45001 Certificate		<ul style="list-style-type: none"> Learn how to implement the ISO 45001 standard and how to assess its effectiveness in your organization. 35 hours of required coursework, 3.5 CEUs
	Managed Fall Protection Certificate		<ul style="list-style-type: none"> Covers the ANSI/ASSP Z359 Fall Protection Code and other relevant fall protection issues. This is not training to become a competent or qualified person. Courses total 3.5 CEUs.
	Risk Assessment Certificate		<ul style="list-style-type: none"> Focus on hazard identification, risk analysis, and risk evaluation. Courses totaling 3.1 CEUs plus one final project.